

# Wilma

# Dykeman

# RiverWay



The Wilma Dykeman RiverWay is a demonstration project for the watershed and a once in a generation opportunity to transform Asheville's rivers into a world class destination for residents and visitors to live, work, and play.



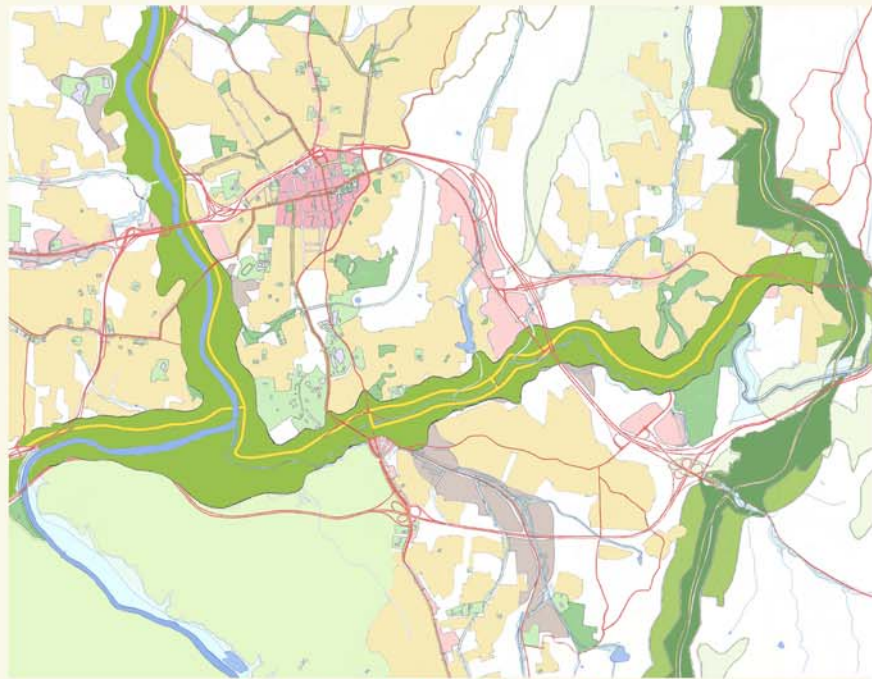
Wilma Dykeman wrote "The French Broad" in 1955, 7 years before Rachel Carson wrote "Silent Spring." Wilma was an Asheville native and Tennessee state historian, who understood and documented that "our economy is our environment." The RiverWay is a tribute to her as a native daughter of the French Broad River Watershed.

## Fast Facts about the Wilma Dykeman RiverWay

RiverLink raised over \$250,000 from the NCDOT, Buncombe County, the city of Asheville, The Asheville Merchants Association, The Tennessee Valley Authority and Progress Energy to develop The Wilma Dykeman RiverWay Plan.

The plan took over two years to complete and involved numerous focus groups and public meetings, encouraging a broad cross-section of our watershed to share ideas.

The NCDOT has included the RiverWay in many of its projects. Most recently it has funded a two-mile trail from the old Asheville motorway to Hominy Creek Park as well as walking and biking trails along NC 191 towards the NC Arboretum.



Map produced by Urban Design Associates  
The 17-mile Wilma Dykeman RiverWay

RiverLink's **Wilma Dykeman RiverWay Plan** consolidates 20 years of planning for the redevelopment of the urban riverfront corridor, and has been adopted by the city of Asheville, Buncombe County, regional planning groups and over 40 civic organizations as the vision for a revitalized riverfront. The Wilma Dykeman RiverWay Plan is a 17-mile greenway linking the French Broad and Swannanoa Rivers into a continuous greenway with separate walking and biking trails anchored on the south at the NC Arboretum, on the east by the Blue Ridge Parkway and on the north by UNCA. The RiverWay is a demonstration project for the entire watershed. In time, it will emerge as a continuous greenway in close proximity to the watershed's major assets and attractions.

